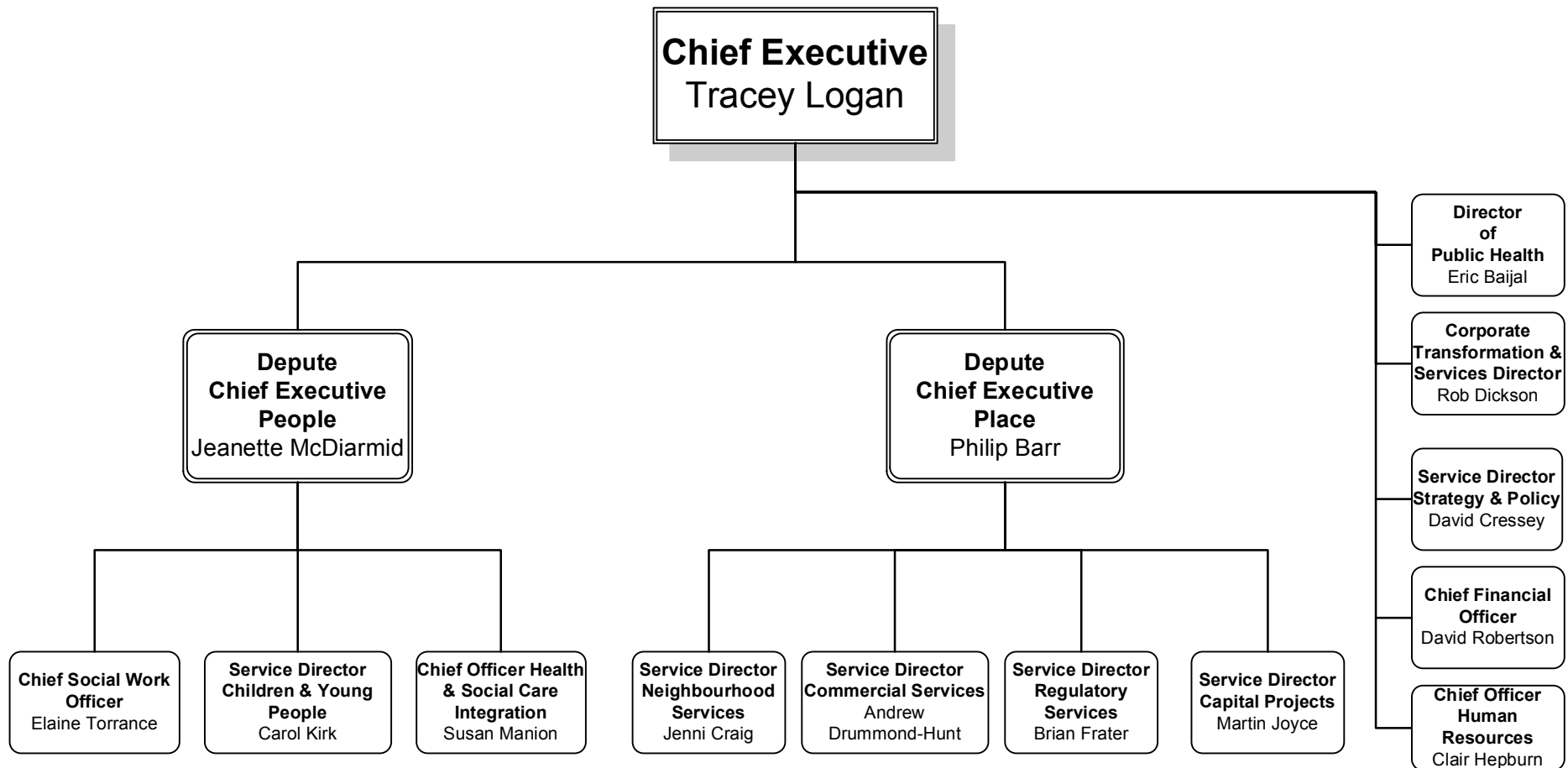


# APPENDIX B

## SCOTTISH BORDERS COUNCIL CORPORATE MANAGEMENT STRUCTURE



# CORPORATE MANAGEMENT STRUCTURE PEOPLE

**Depute  
Chief Executive  
People**  
Jeanette McDiarmid

**Chief Social Work  
Officer**  
Elaine Torrance

- Agency Decision Maker
- Out of Hours Service (incl. Bordercare)
- Criminal Justice Services (whole systems approach)
- Mental Health Officer
- Child & Adult Protection (Governance)
- MAPPA (Governance)
- Statutory Quality and Standards

**Service Director  
Children & Young  
People**  
Carol Kirk

- Schools
- Integrated Early Years Services
- Adoption and Fostering Teams
- Integrated Locality Services
- Youth Justice
- Residential Child Care
- Child Protection (Practice)

**Chief Officer Health  
& Social Care  
Integration**  
Susan Manion

To transfer to Integrated Service in 2015

- Locality Teams
- Occupational Therapy
- Learning Disability Services
- Physical Disability Services
- Joint Integrated Mental Health Service
- Strategic Commissioning